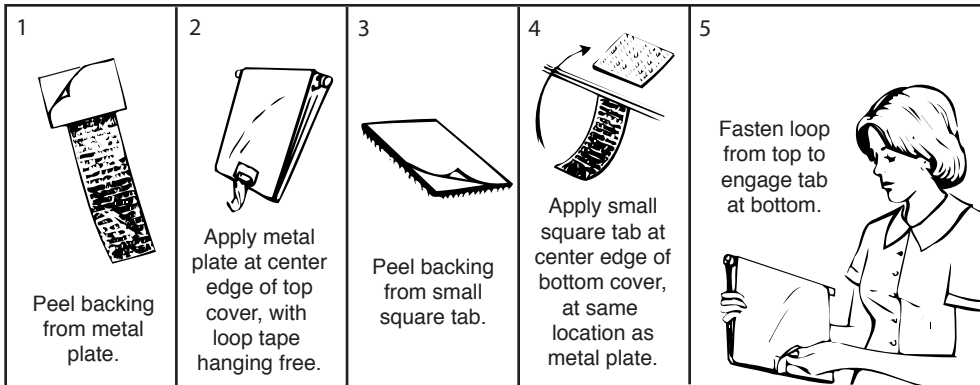


Instructions For Adhering Chart Lok® Closure

A unique reusable device for keeping bulging binders, loose leaf binders notebooks, and record charts closed and neat without losing their contents.



Important: Clean surface with alcohol, allow to dry.

Cat. No.	Item
----------	------

251101	Chart-Lok-10 Pak
251102	1 1/2" Replacement Tab (for Chart-Lok) 10 Pak
251103	Chart-Lok Only-No Tab 10 Pak

MANUFACTURERS OF **BEAM** PRODUCTS
OMNIMED INC.

☒ 800 Glen Avenue, Moorestown, New Jersey 08057

☒ 1.800.257.BEAM (2326) • Local: 1.856.359.2231

☒ Fax: 1.856.359.2249 • E-mail: info@omnimedbeam.com

Visit our web page on the internet: www.omnimedbeam.com

Products to Help People...Help People