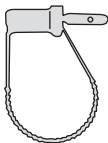
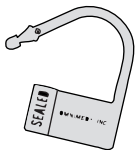


# Instruction Sheet

## Safety Control Seals



**Padlock Control**  
(Red, Yellow & Green)



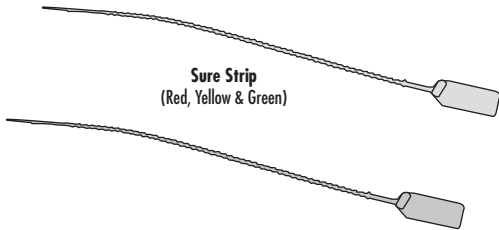
**Safety Control**  
(Red, Yellow & Green)



**Multi Grip Safety (Yellow Only)**

## Safety Control Seals

Once locked, they must be broken to remove.  
No scissors or tools needed to break seals.  
Pull to break!



**Sure Strip**  
(Red, Yellow & Green)

- 484107** Safety Control Seal with Numbers - 100/Pkg.
- 484108** Safety Control Seal without Numbers - 100/Pkg.
- 484125** Padlock Control Seal - 100/Pkg.
- 484130** Beam® Sure Strip Safety Seal - 100/Pkg.
- 484135** Multi Grip Safety Seal - 100/Pkg.



MANUFACTURERS OF **BEAM** PRODUCTS

**OMNIMED** INC.®

- ✉ 800 Glen Avenue, Moorestown, New Jersey 08057
- ☎ 1.800.257.BEAM (2326) • Local: 1.856.359.2231
- ✉ Fax: 1.856.359.2249 • E-mail: [info@omnimedbeam.com](mailto:info@omnimedbeam.com)

Visit our web page on the internet: [www.omnimedbeam.com](http://www.omnimedbeam.com)

Products to Help People...Help People