

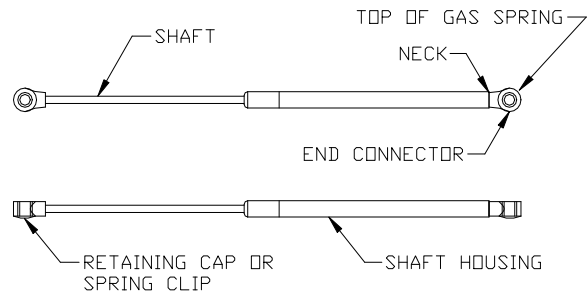
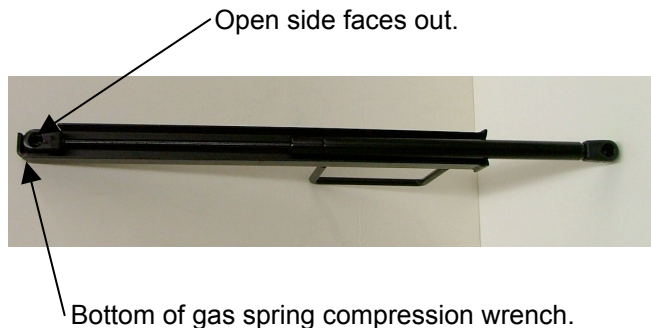
# INSTRUCTION SHEET

## Gas Spring Replacement

### Catalog #: 291552

#### Remove existing Gas Spring

Using a flat head screwdriver, partially pull out the spring clip on the top end of the gas spring. Grasp the shaft housing and pull away the top half of the gas spring. It should unfasten from the ball stud on the bracket. Repeat this procedure for the bottom of the gas spring.



#### Compressing new Gas Spring

Place the gas spring in the compression wrench with the shaft side in the bottom of the wrench. The open side of the gas spring should be facing out the right side opening in the wrench (as shown above).

While holding the cylinder body of the gas spring and the compression wrench, place the top of the gas spring on the floor. When the wrench is in a vertical position, push down with enough force to compress the shaft into the shaft housing and slip the neck of the end connector into the slotted end of the compression wrench.



#### Installing new Gas Spring

While holding the tool by the handle, guide the open side of the end connector into the ball stud mounted on the door. Firmly push, either by hand or with a soft mallet, until the gas spring is secured on the ball stud.

Tilt the door up gradually until the gas spring tool can clear the cutout on the shelf of the wall mount. Continue to move the door up and down until the open side of the connector is flush with the upper ball stud. Firmly push the top of the gas spring until it seats with the ball stud.

Pull the gas spring compression wrench away from the top of the gas spring, then bottom.

Open and close the door a few times to confirm that the gas spring is seated properly.

